



Sealing Dry Materials
With Non-contacting Air Seal Technology



AGENDA

- What is an air seal, and how does it work?
- Basic Air Seal Operation
- The Different Types of Air Seals
- Common Applications

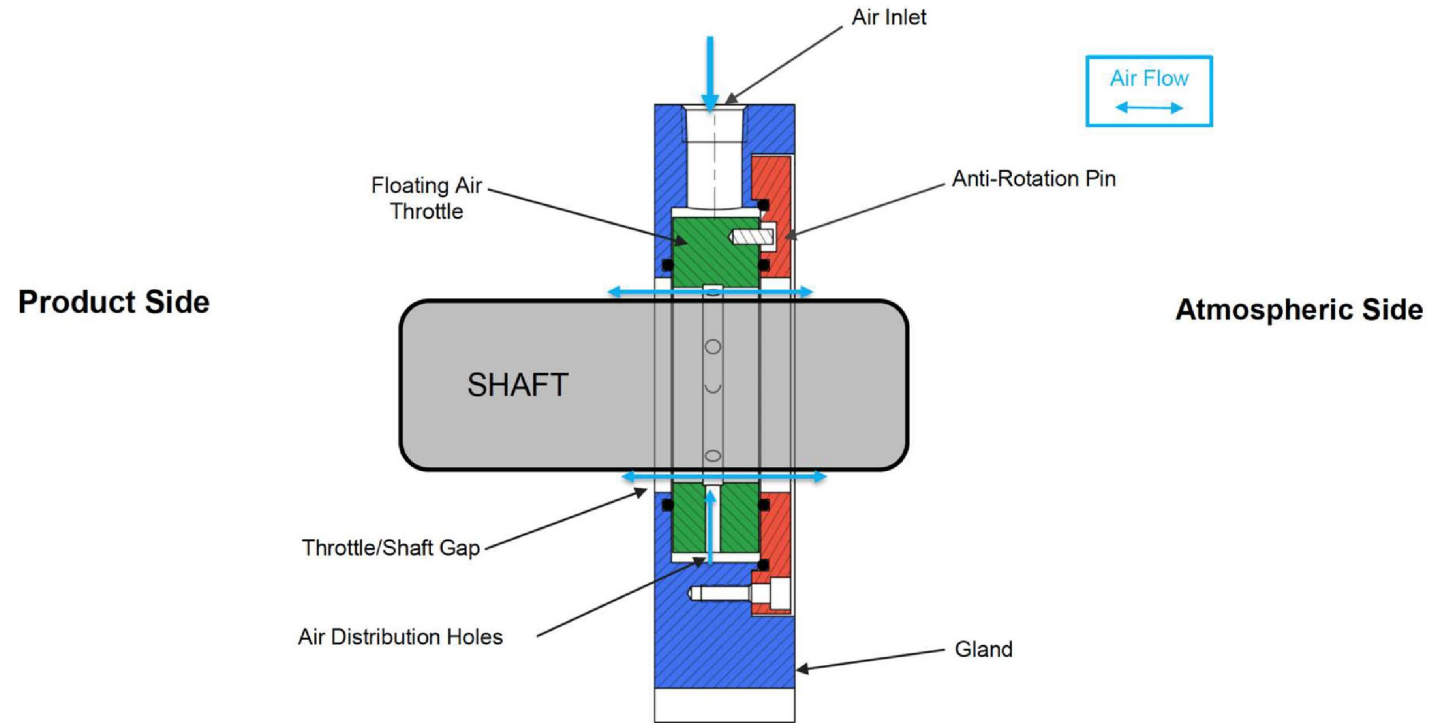
What is an Air Seal?



Pneumatic Seal that relies on Air/Gas to Seal the Product

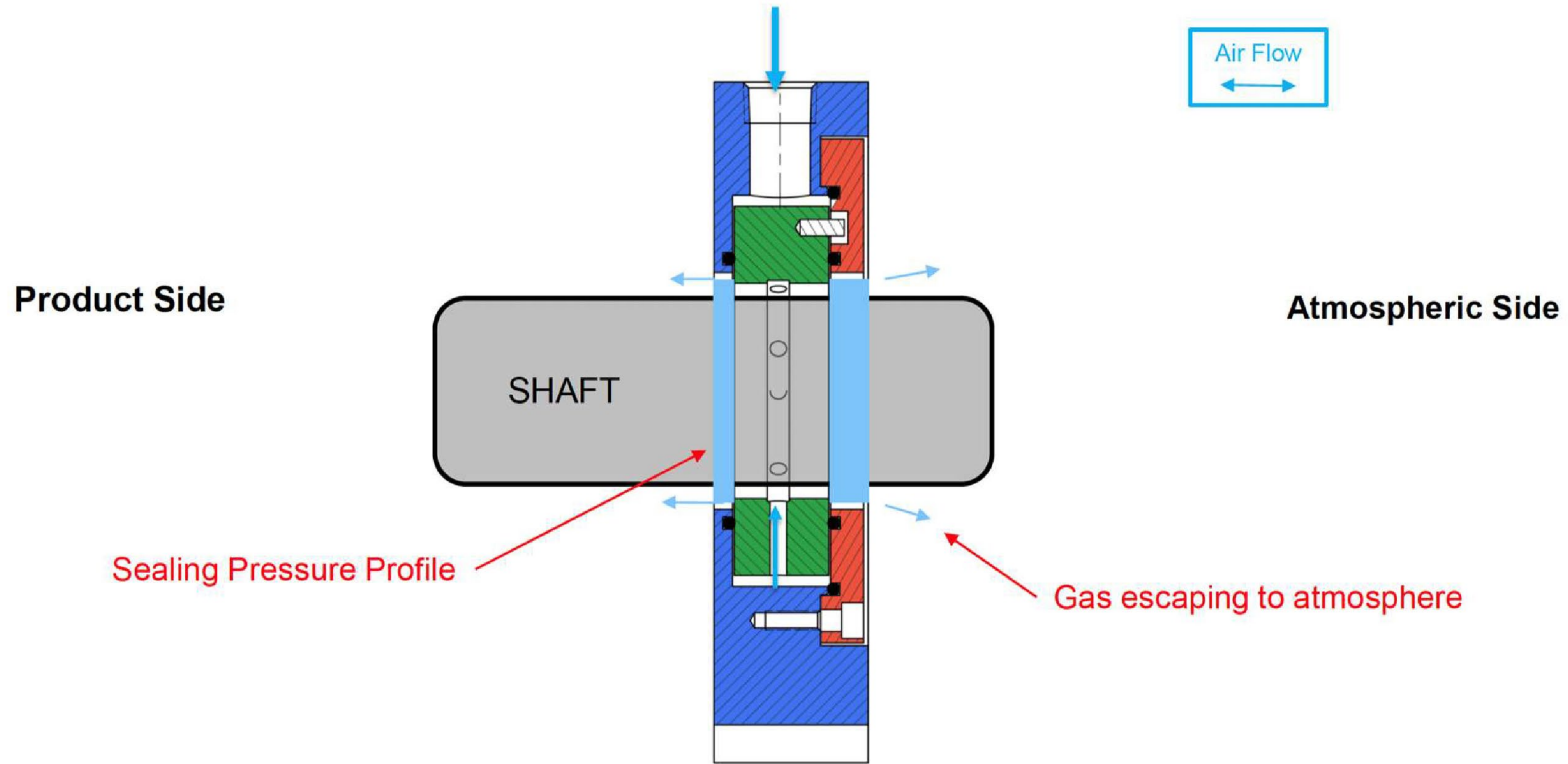
Air Seal

BASIC OPERATION

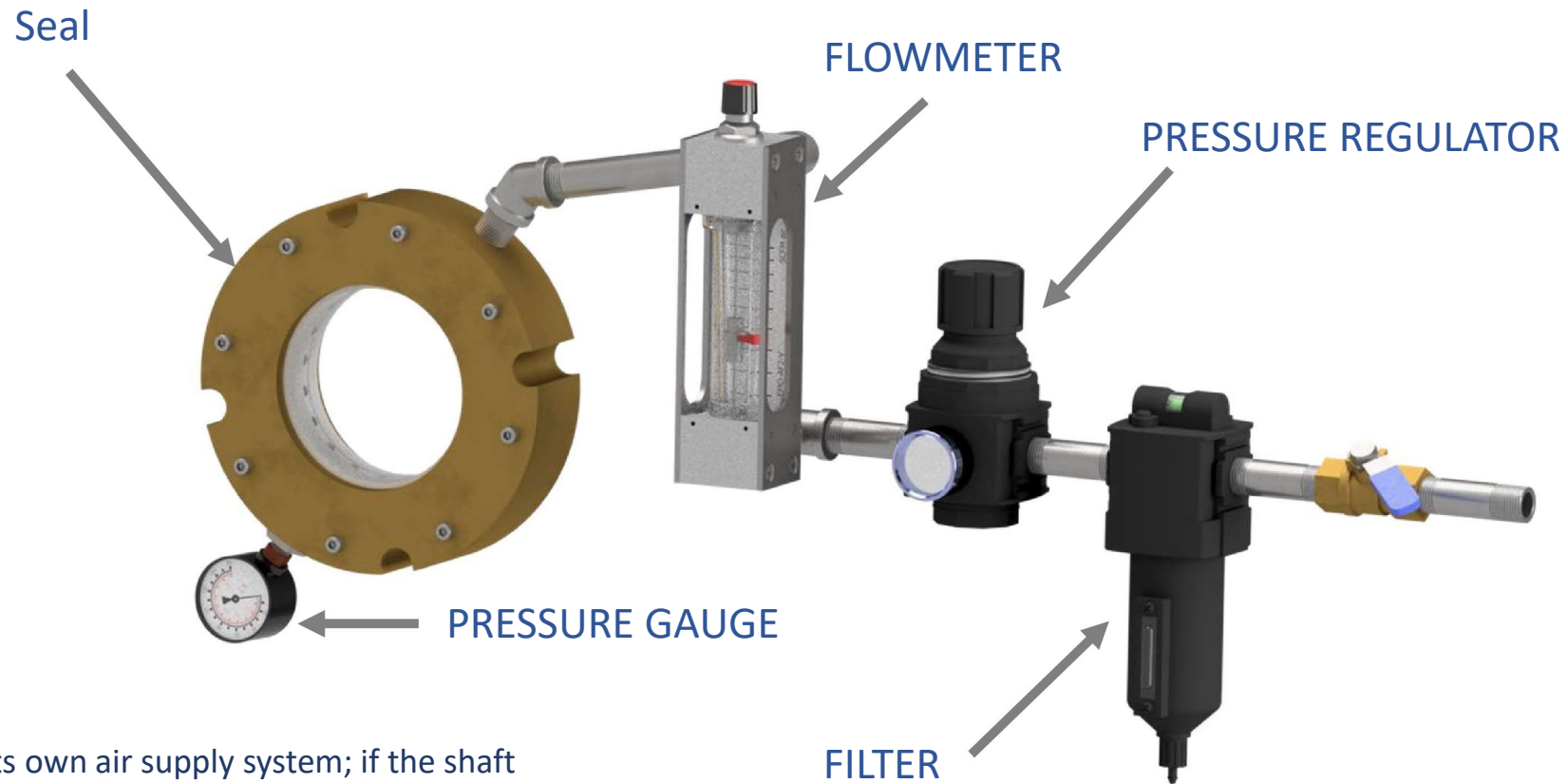


Air Seal

BASIC OPERATION



AIR SUPPLY



Note:

Each seal MUST have its own air supply system; if the shaft diameter is equal to or greater than $\geq 6''$ (152 mm), the seal requires two air inlets 180 degrees apart.

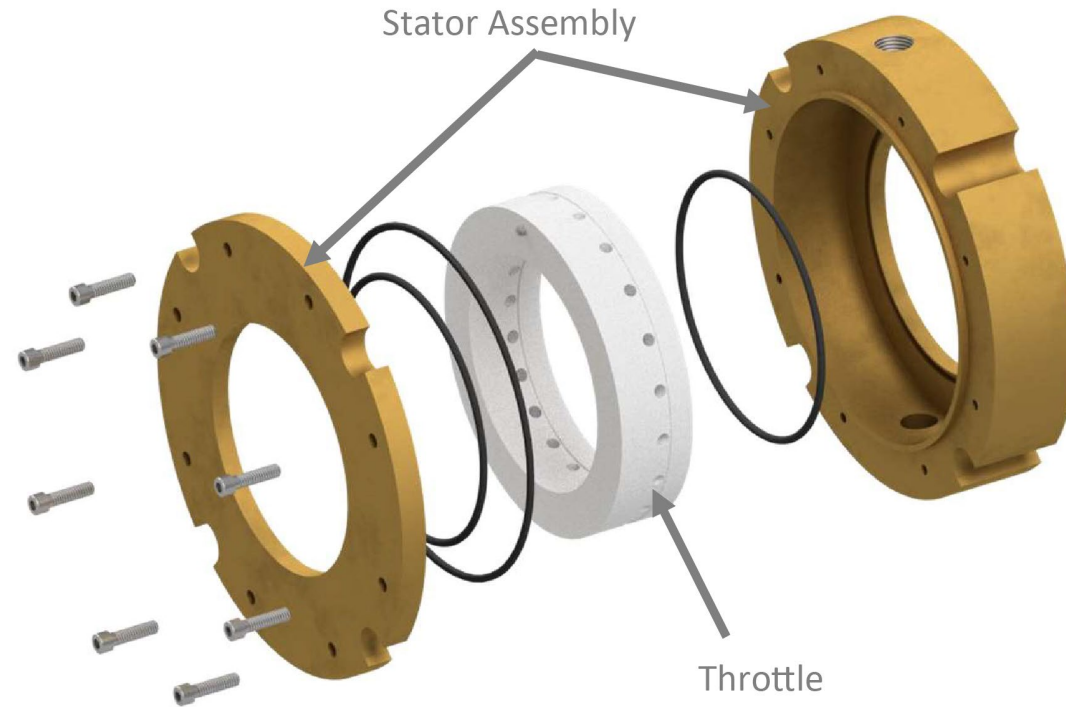
Air Seal Configurations

Solid | Split | Rotored

Solid

Design Features

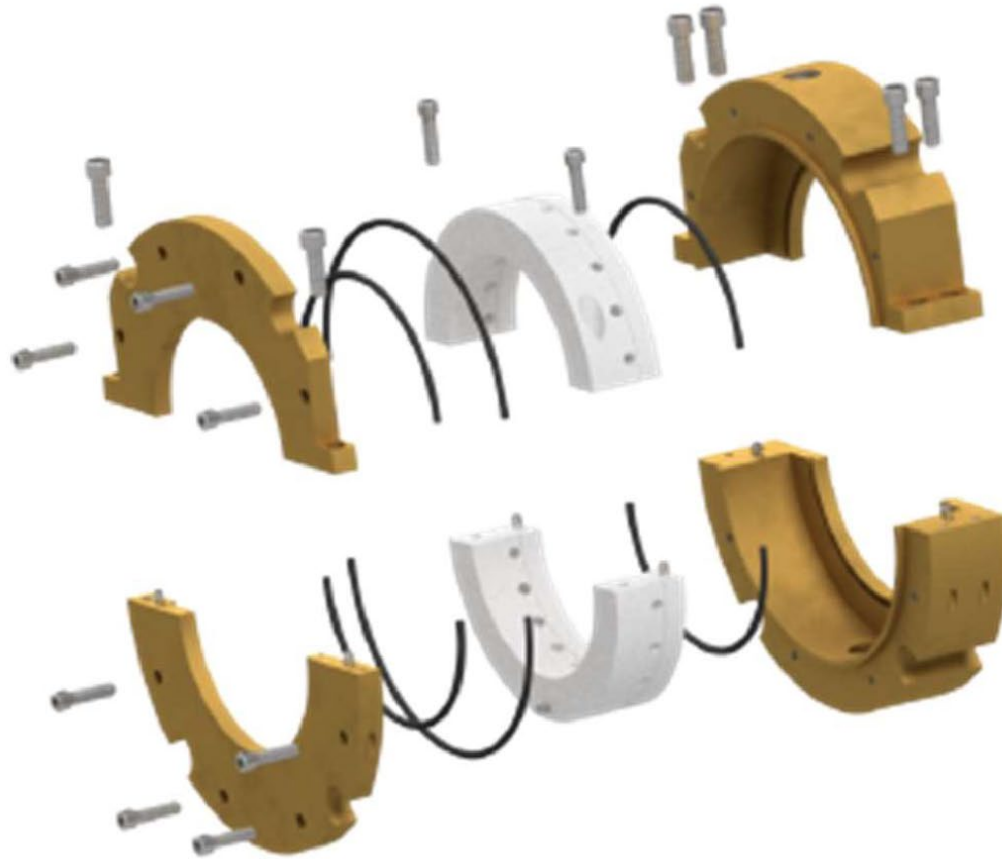
- Stator assembly
 - Housing adapts to the machine
 - End cover
 - Throttle skates
- Throttle
 - Gas distribution



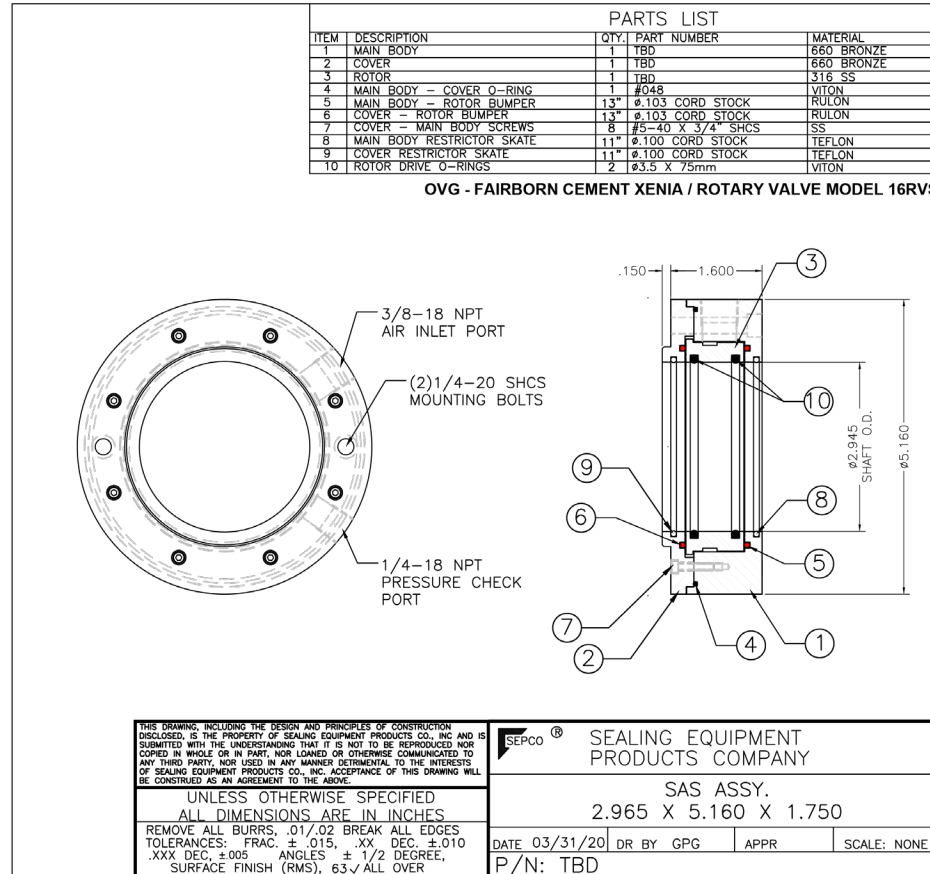
Split

Design Features

- Stator assembly
- Throttle
- Throttle Skates



Rotored



INDUSTRIES & APPLICATIONS

Air Seal

INDUSTRIES & APPLICATIONS

PULP & PAPER

- Agitators
- Hydropulpers
- Stock chests



FOOD & BEVERAGE

- Chocolate conches
- Bread dough mixers
- Dry ingredient mixers
(flour, sugars, and spices)



PHARMACEUTICAL

- Calcium carbonate mixer
- Any powder mixers and
some grinders



Air Seal

HYDROPULPER

BEFORE



AFTER



Air Seal

CHOCOLATE CONCHE

BEFORE



AFTER



QUESTIONS?

THANK YOU!

Cody Kaufmann
Business Development Manager
SEPCO
codyk@sepc.com